

# AGENDA



**34<sup>th</sup> World Conference on  
Applied science, Engineering and Technology,  
Dubai.**

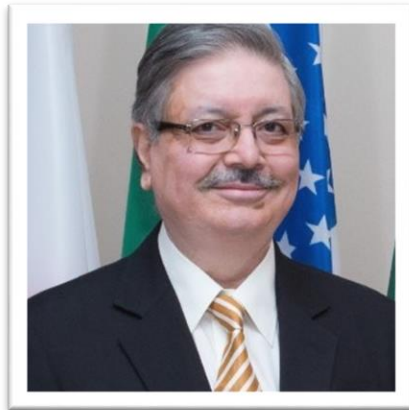
**(34<sup>th</sup> WCASET-2021)**

**23rd March, 2021**

**Virtual Conference**



## **Keynote Speaker**

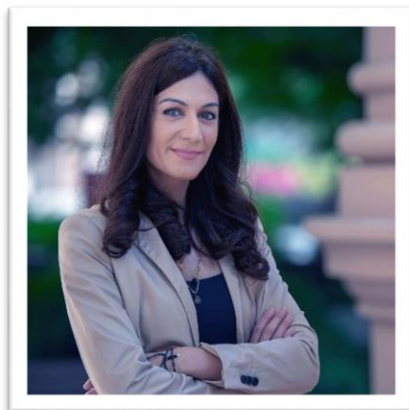


**Dr. Amitabh Upadhyia  
Provost & Vice President (Academic Affairs),  
American College of Dubai,  
United Arab Emirates.**

## **Session Chairs**



**Ms. Maria Efstratopoulou**  
**Associate Professor,**  
**United Arab Emirates University,**  
**United Arab Emirates.**



**Ms. Micheline Bejjani**  
**Assistant Professor,**  
**American University in Dubai,**  
**United Arab Emirates.**

***23<sup>rd</sup> MARCH 2021***  
***PROGRAM SCHEDULE***

## **Program Schedule (GMT+4)**

- |          |  |                             |
|----------|--|-----------------------------|
| <b>1</b> | <b>Introduction by Moderator</b>             | <b>09:30 AM to 09:40 AM</b> |
| <b>2</b> | <b>Welcome Speech</b>                        | <b>09:40 AM to 09:50 AM</b> |
| <b>3</b> | <b>Keynote Speech by Dr. Amitabh Upadhya</b> | <b>09:50 AM to 10:10 AM</b> |
| <b>4</b> | <b>Session chair speeches</b>                | <b>10:10 AM to 10:40 AM</b> |
| <b>5</b> | <b>Technical Session</b>                     | <b>10:40 AM to 02:10 PM</b> |
| <b>6</b> | <b>Vote of Thanks</b>                        | <b>02:10 PM to 02:15 PM</b> |

# Technical Session

**Parental Stress and children's Self-regulation problems in families with nonverbal children with Developmental Disabilities (ASD)** **Maria Efstratopoulou**  
(10:40 A.M. – 10:55 A.M.)

**The Relevance of Culture Affecting Gen-Y Consumers on Brand Equity in Dubai: The Integration of Social Media Advertising** **Majed Alkindi**  
(10:55 A.M. – 11:10 A.M.)

**Optical properties of MgO thin films deposited on GeO<sub>2</sub> and SiO<sub>2</sub> substrates** **Micheline Bejjani**  
(11:10 A.M. – 11:25 A.M.)

**Effect of different solvent system on oil extraction from immobilized microalgae cells of *Chlorella vulgaris*: Kinetic and thermodynamic studies** **Nagaarasan Ramesh**  
(11:25 A.M. – 11:40 A.M.)

**Artificial Fish Swarm Algorithm (AFSA), Whale Optimization Algorithm (WOA), Optimization, Benchmark Function.** **Norazian Subari**  
(11:40 A.M. – 11:55 A.M.)

**New Enhanced Whale Optimization Algorithm for Reactive Power Optimization** **Imran Rahman**  
(11:55 A.M. – 12:10 P.M.)

**Work Attitudes and motivation of Faculty of the College of Education** **Christopher G. Francisco**  
(12:10 P.M. - 12:25 P.M.)

**Assessment of eLearning Tools Utilized by IT Faculty of Programming Course in the New Normal** **Carlo Genster Camposagrado**  
(12:25 P.M. – 12:40 P.M.)

**Framework for Diffusion of Clean Energy Products in Rural Areas of India** **Shiv Sankar Das**  
(12:40 P.M. – 12:55 P.M.)

**Consumers' perception about sustainable fashion: a case study of Pakistan** **Faiza Azeem**  
(12:55 P.M. – 1:10 P.M.)

**Effect of curing condition on strength of high-volume fly ash roller compacted concrete**

**Sultan Husein Bayqra**  
*(01:10 P.M. – 01:25 P.M.)*

**Effect of Fiber Type and Content on Fresh and Some Hardened State Properties of Cementitious Systems**

**Oznur Biricik**  
*(01:25 P.M. – 01:40 P.M.)*

**Proposal of a load balancing for a company based on Opendaylight**

**Samba Diouf**  
*(01:40 P.M. – 01:55 P.M.)*

**Proposal for an intelligent digital teacher's textbook solution adapted to the Bachelor-Master-Doctorate system**

**Ulrich Hermann Semevo Boko**  
*(01:55 P.M. – 02:10 P.M.)*

**Thank you!**